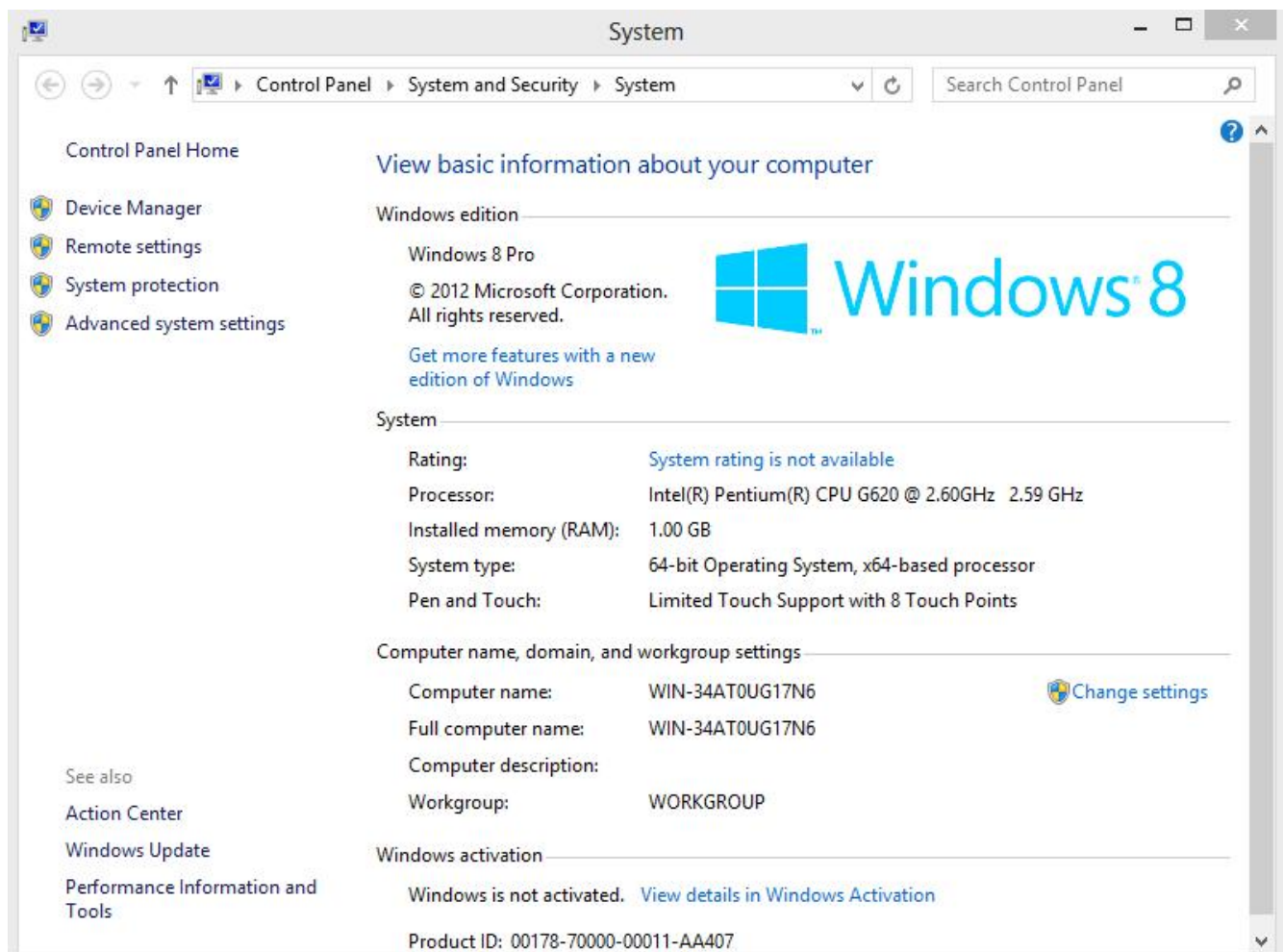


Install USB Virtual COM Port Driver in Windows 8

1. Instruction in text

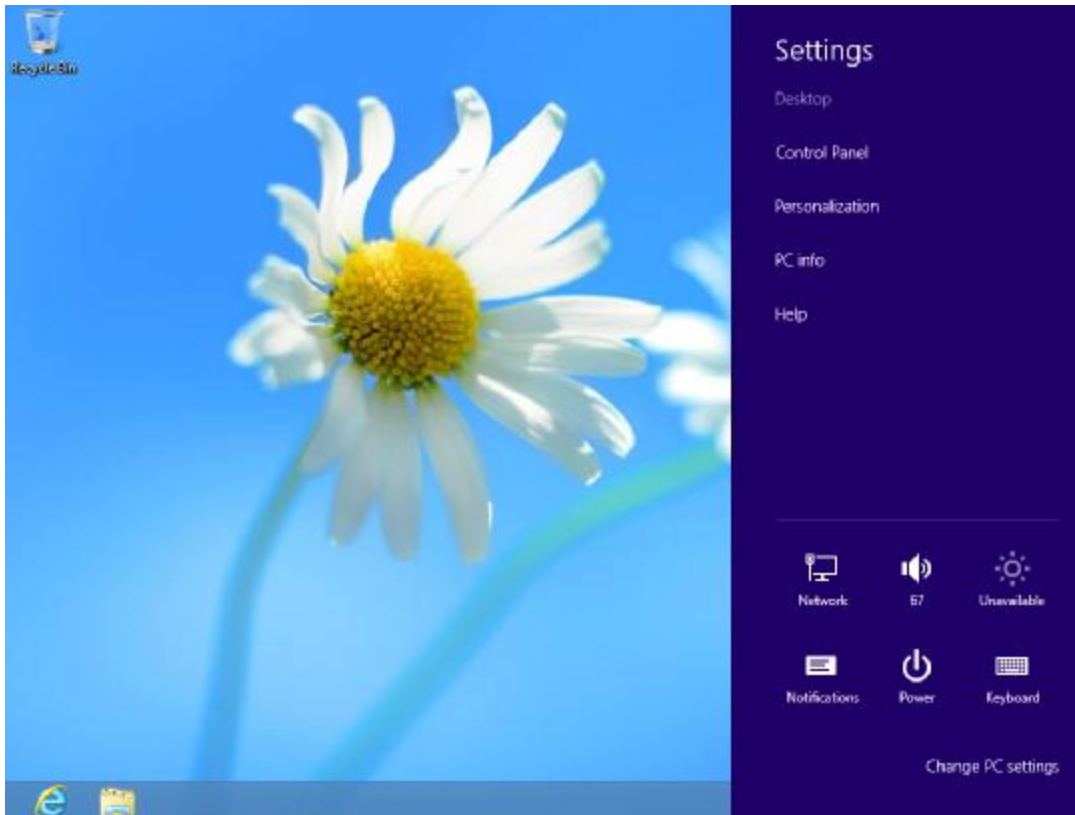
Start Windows 8, and follow the below steps,

1. Press [Win]+[I], the setting panel will display
2. Click "Change PC settings"
3. Click "General"
4. Go to "Advanced startup" and click "Restart now"
5. Click "Troubleshoot"
6. Click "Advanced options"
7. Click "Startup Settings"
8. Click "Restart"
9. The PC will restart, and press functions key "F7" or numbers key "7"
10. Install the USB Virtual COM port accordingly

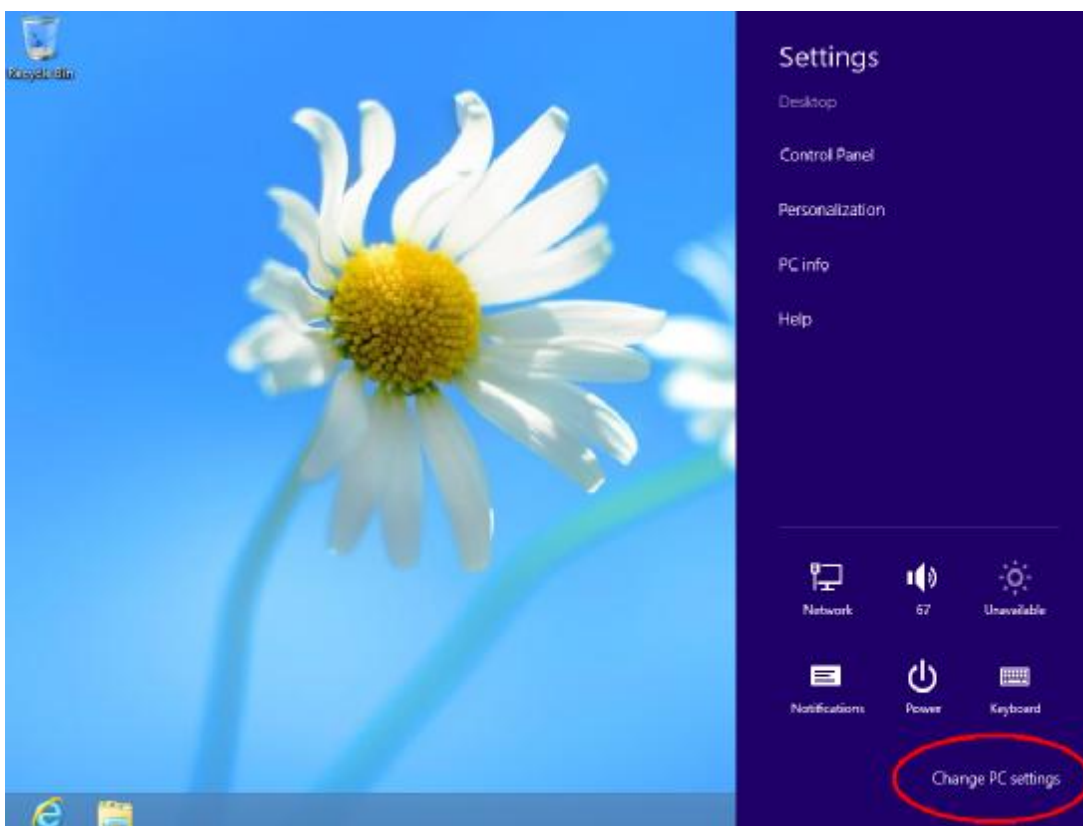


2. Detailed steps with screenshots:

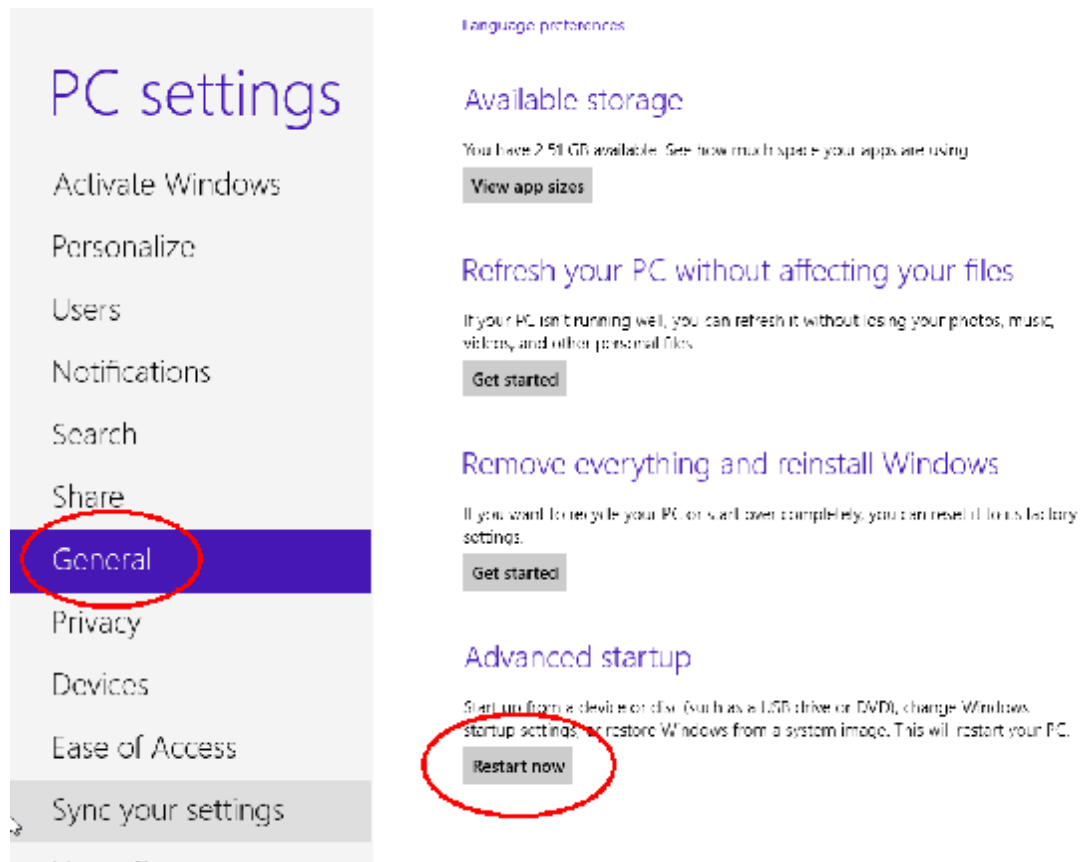
1. Press [Win]+[I], the setting panel will display



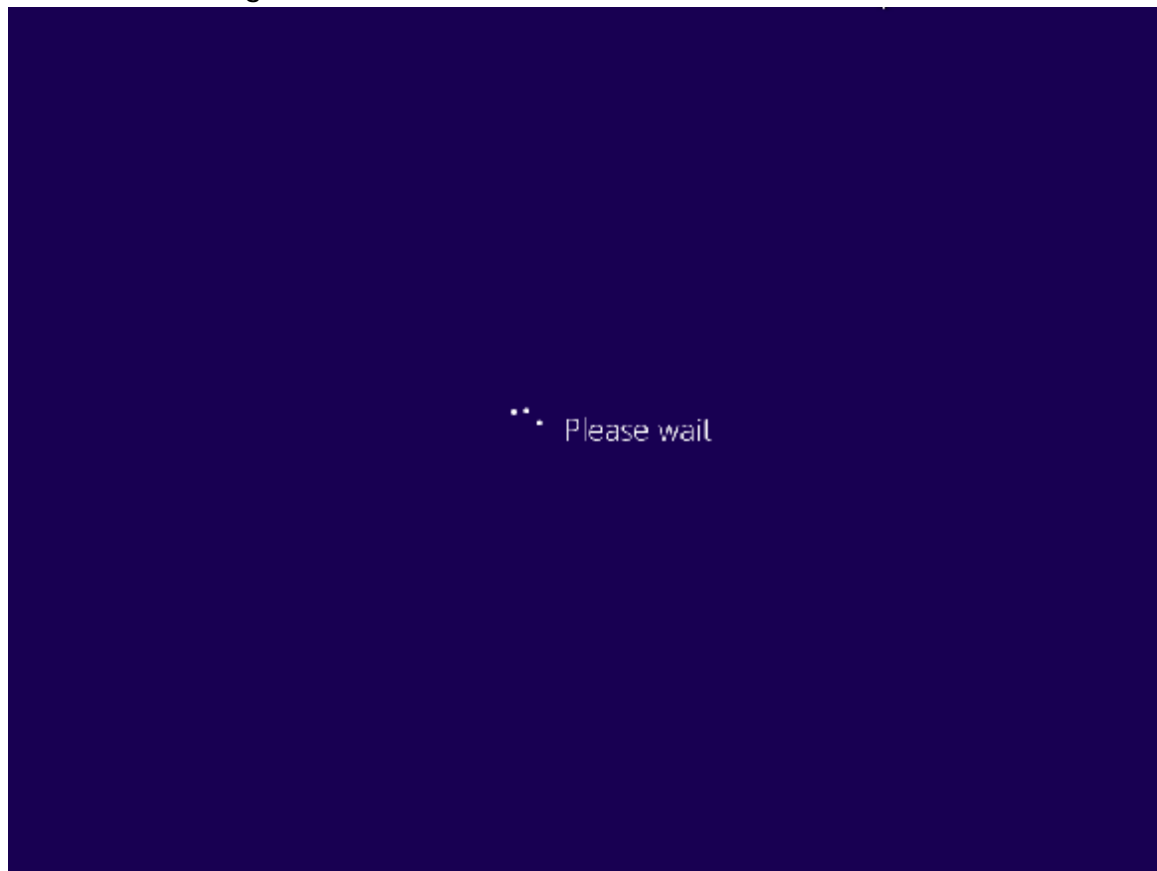
2. Click "Change PC settings"



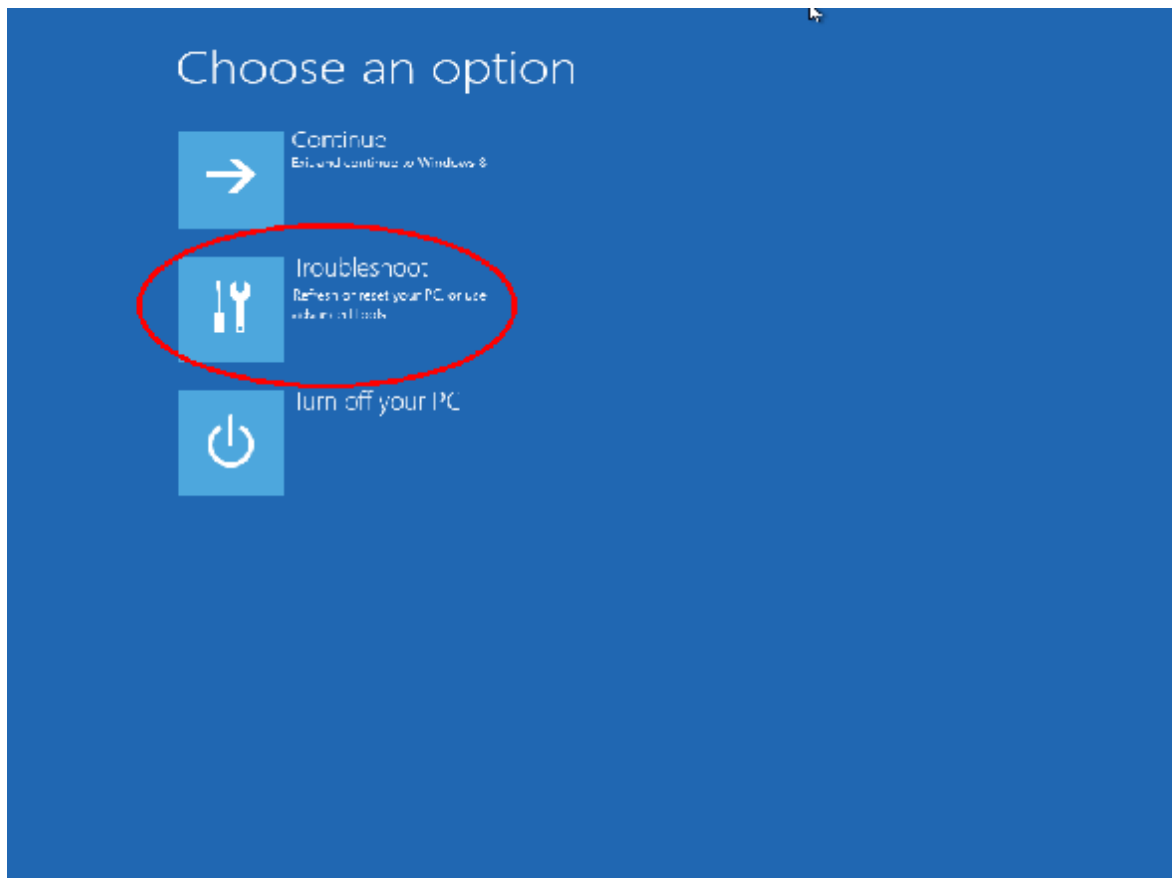
3. Click "General". Go to "Advanced startup" and click "Restart now"



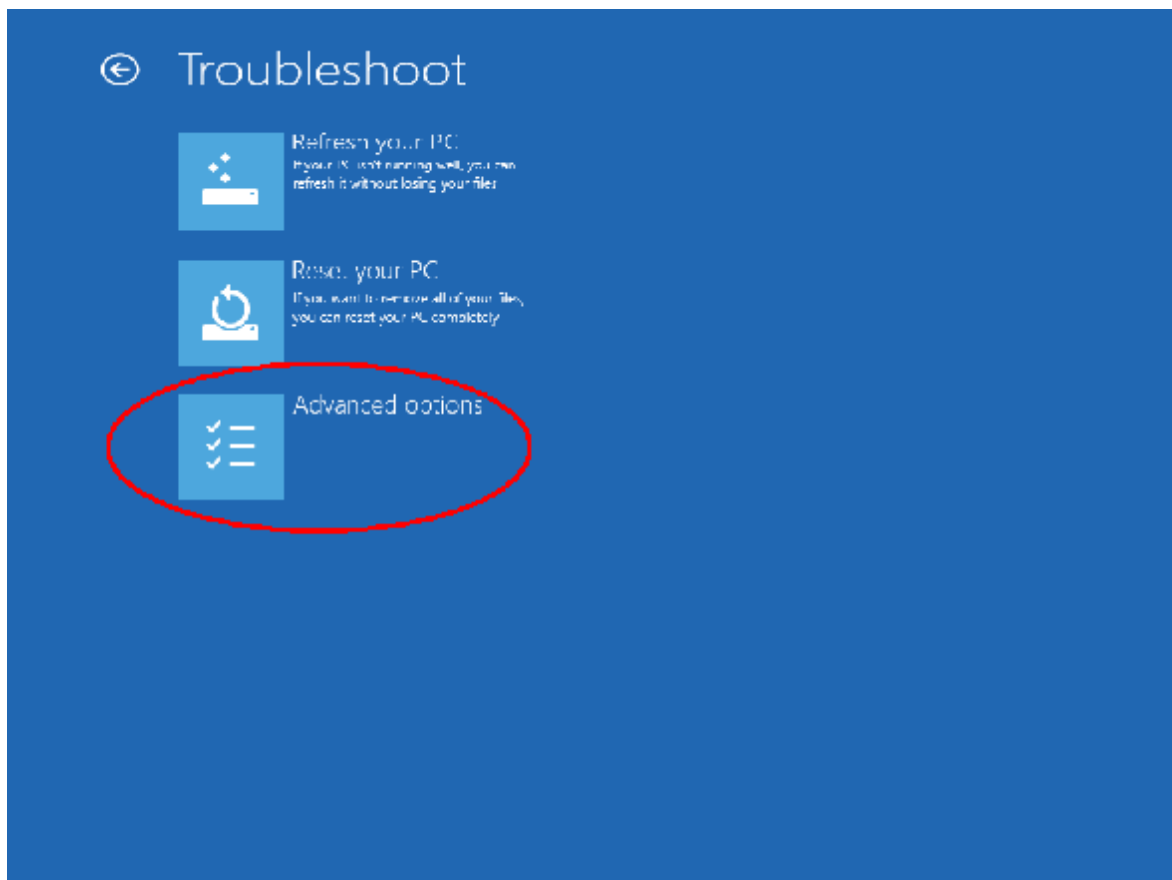
4. PC is restarting.



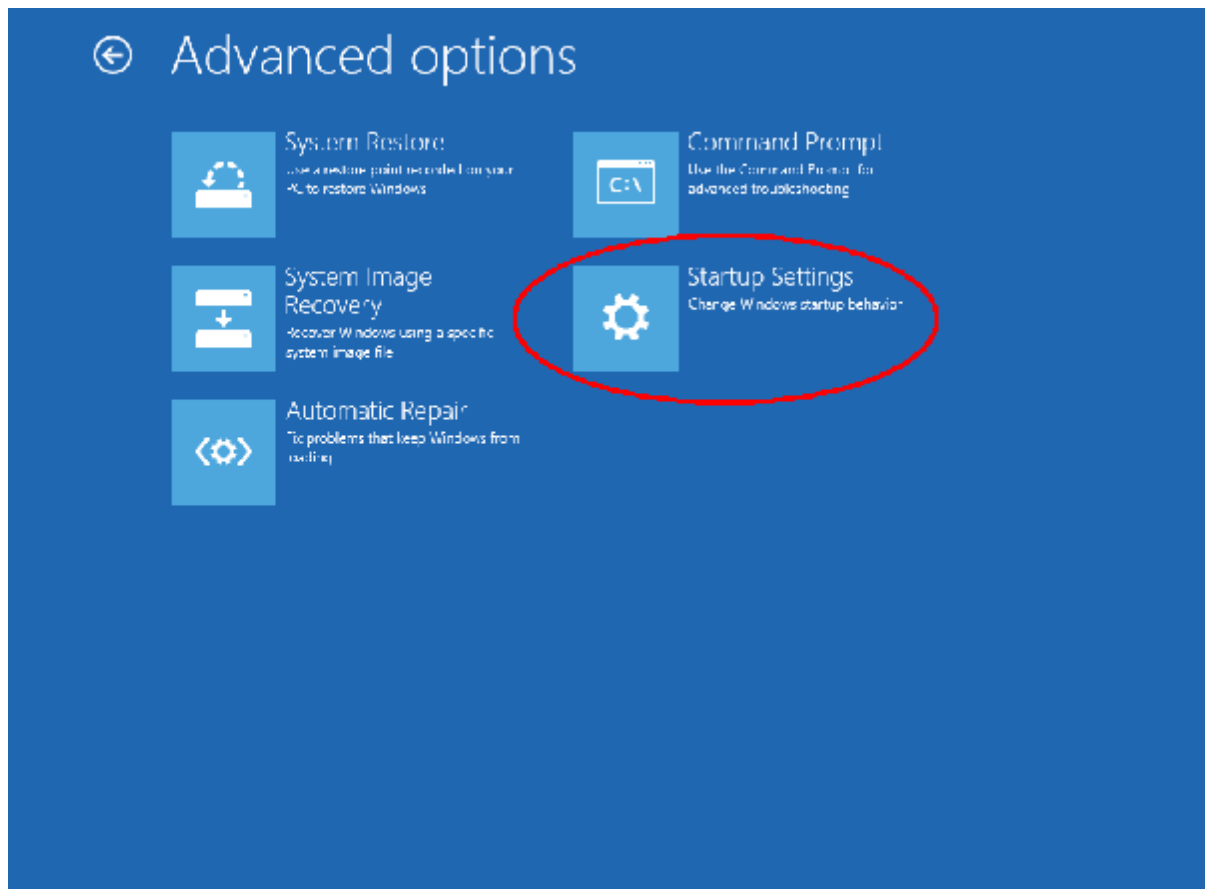
5. Click "Troubleshoot"



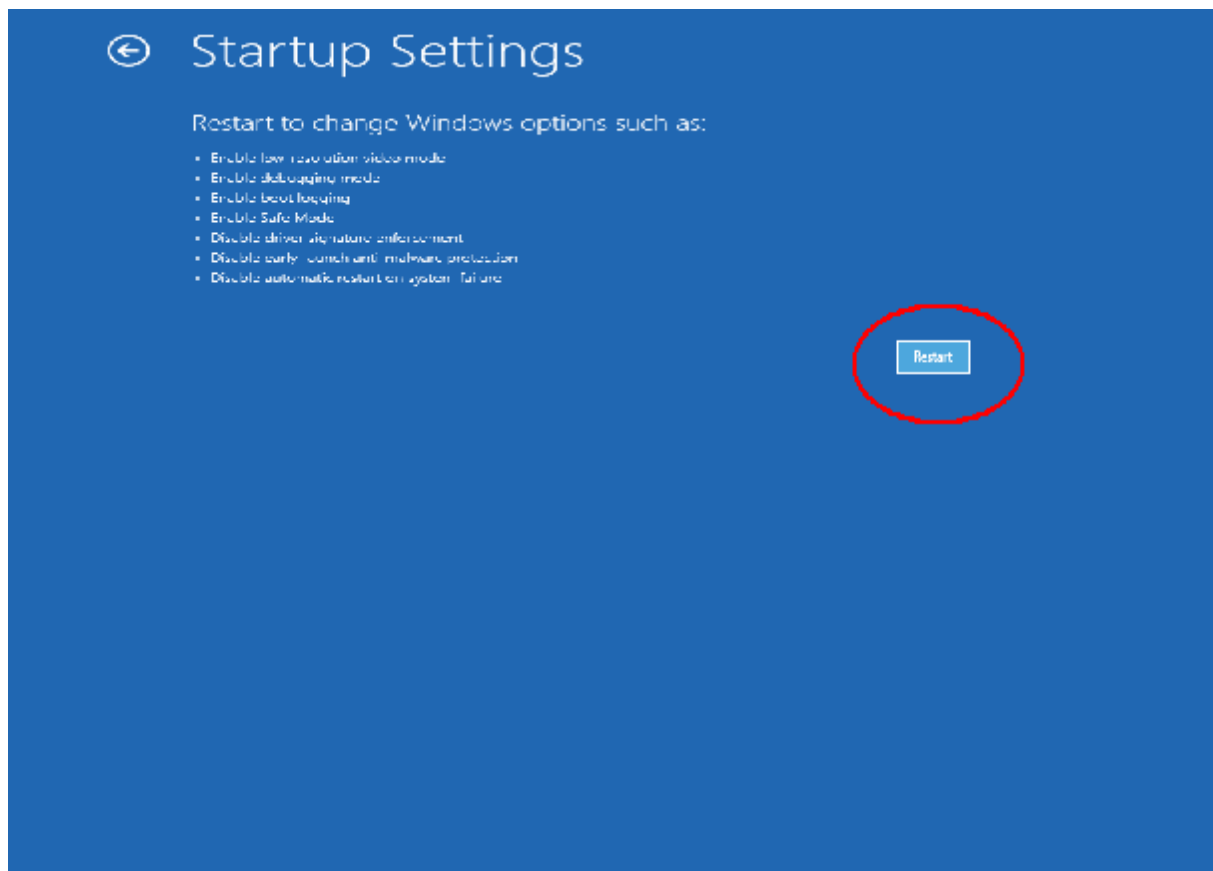
6. Click "Advanced options"



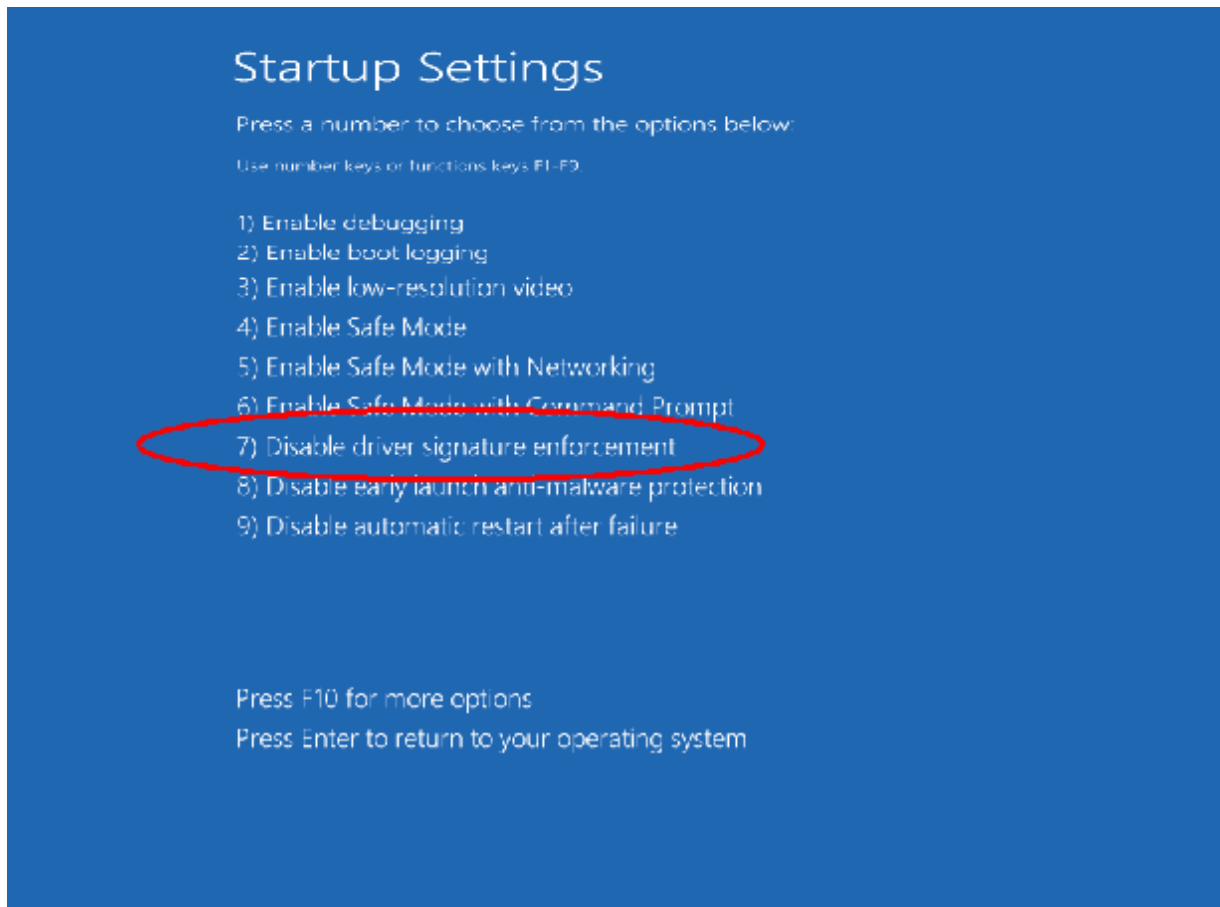
7. Click "Startup Settings"



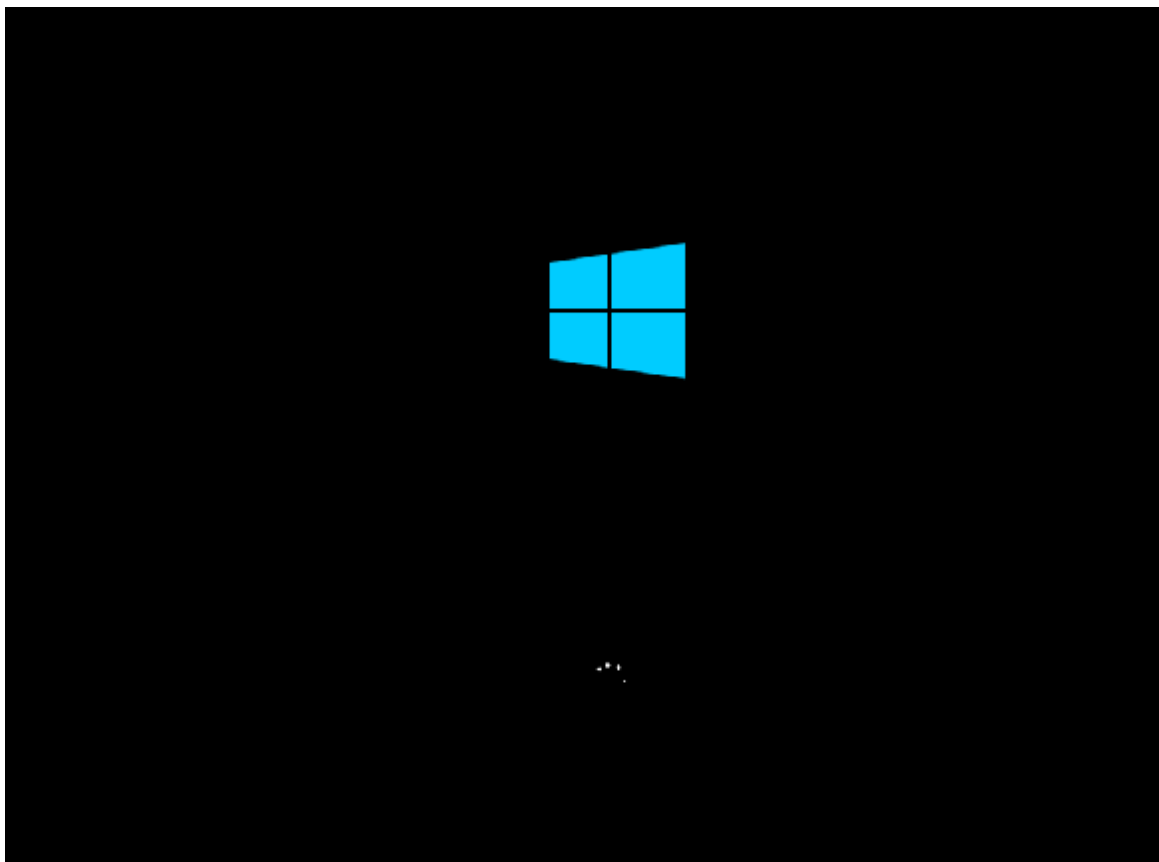
8. Click "Restart"



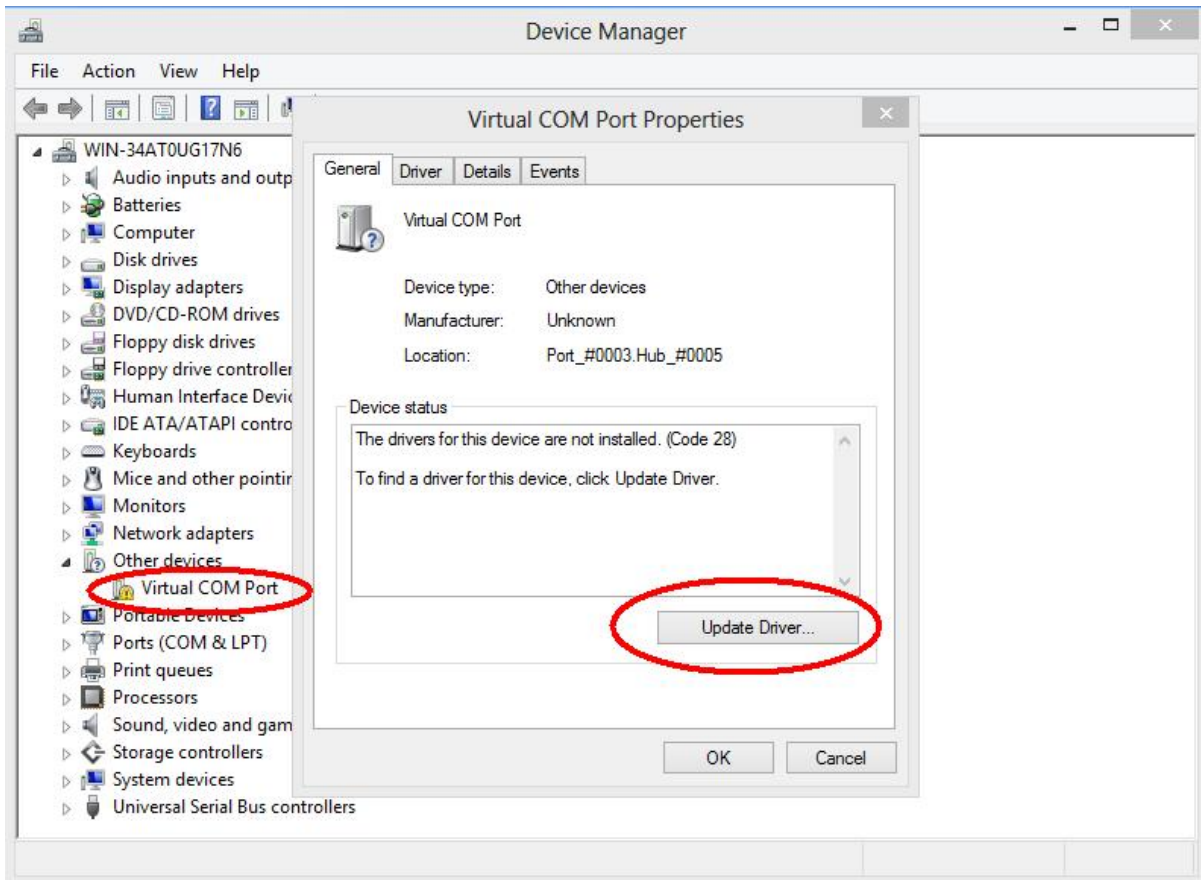
9. The PC will restart, and press function key "F7" or number key "7" to choose "Disable driver signature enforcement"



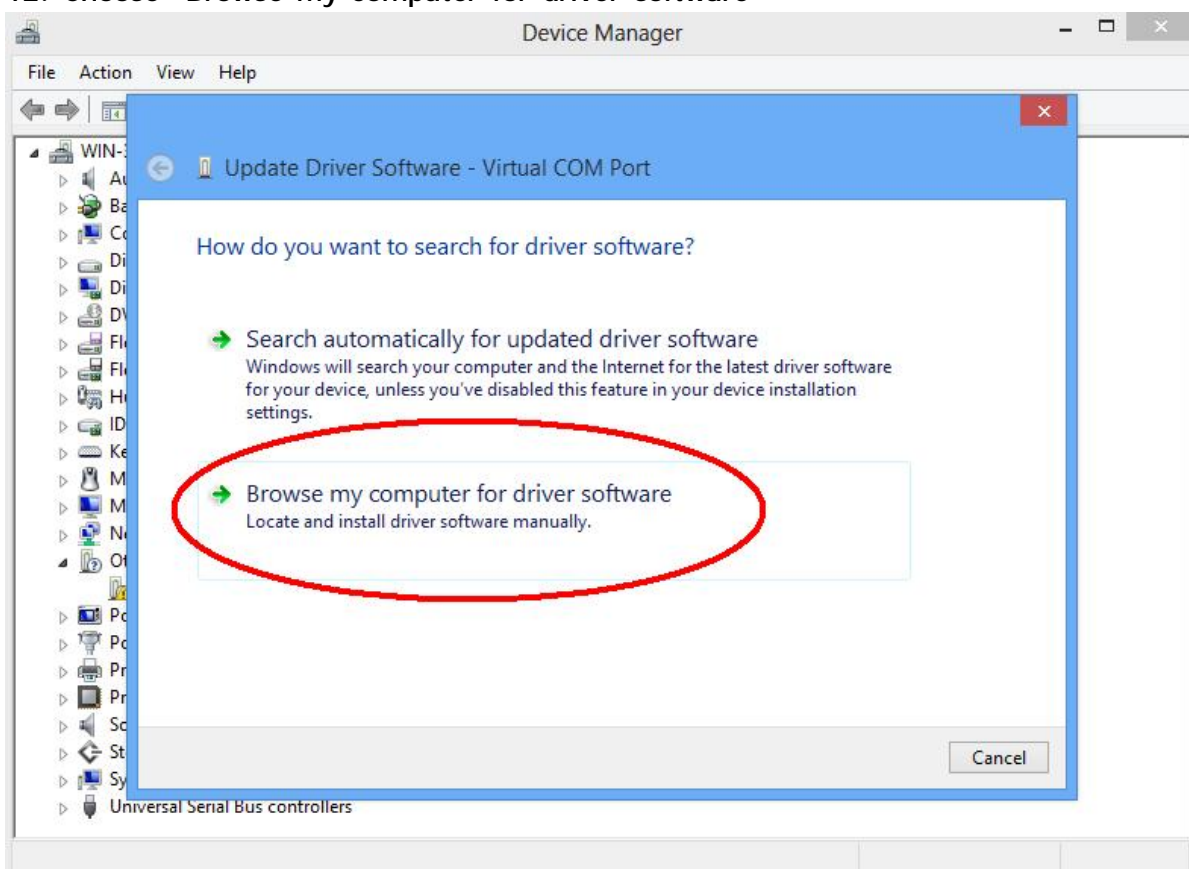
10. Returning to Windows 8



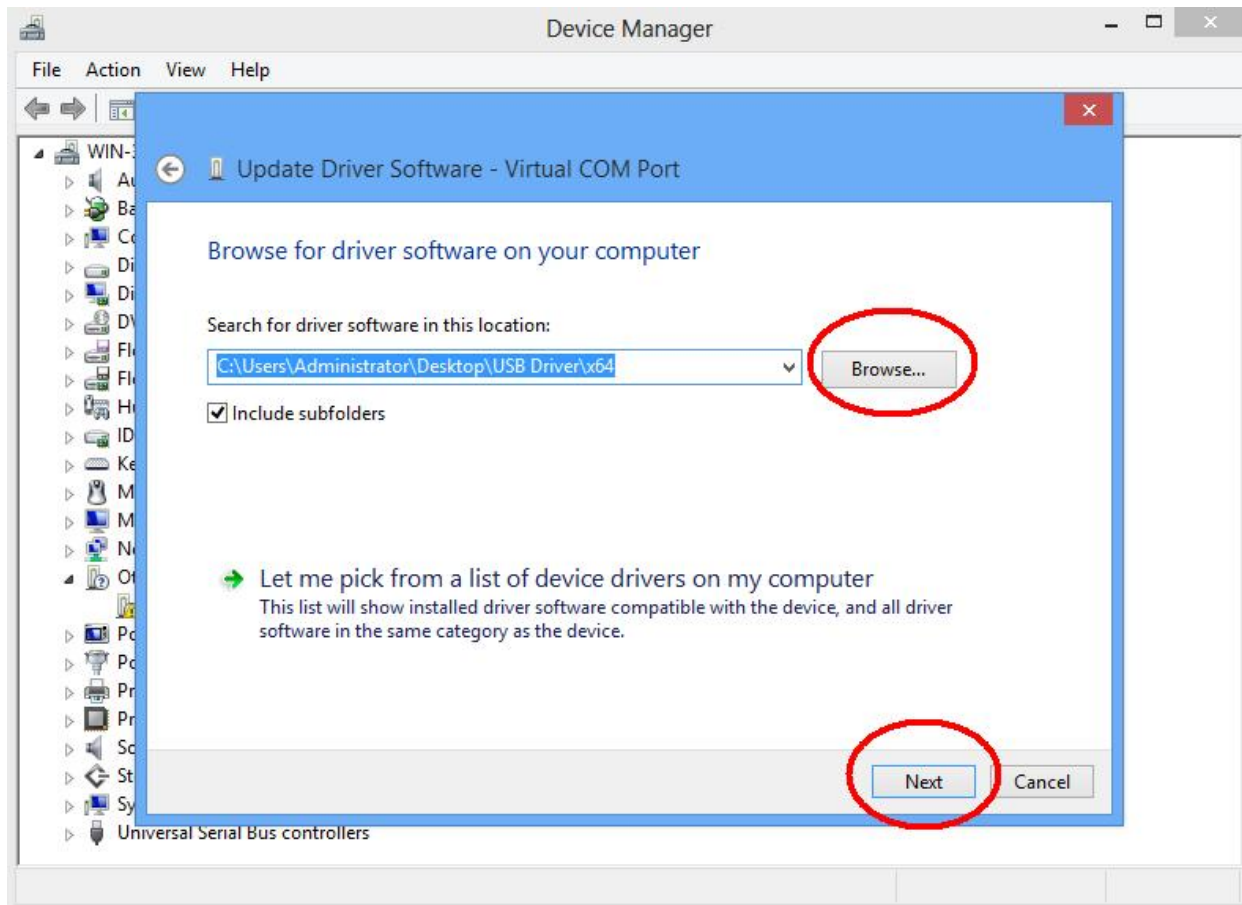
11. In Device Manager, click "Other devices", right click "Virtual COM Port", click "Properties", and click "Update Driver".



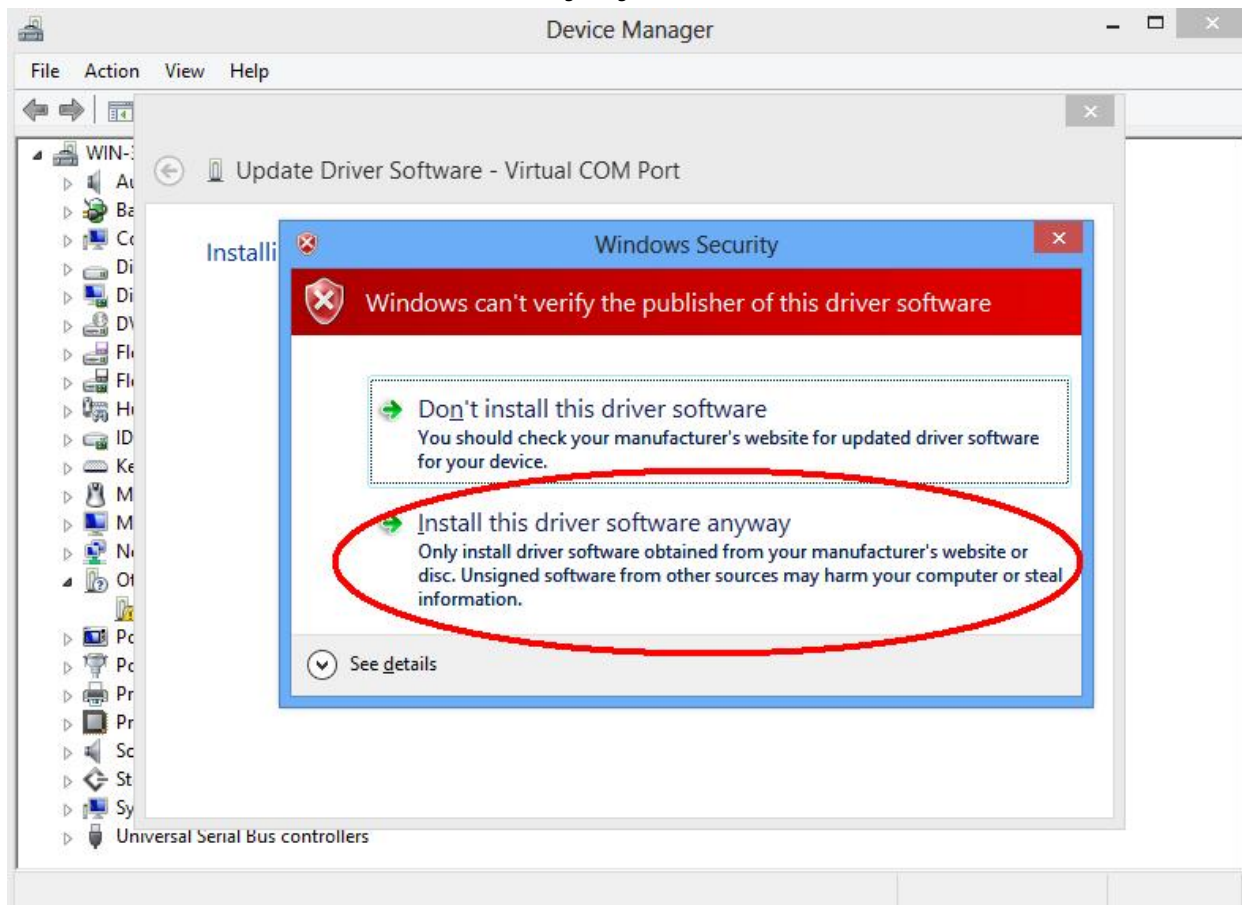
12. Choose "Browse my computer for driver software"



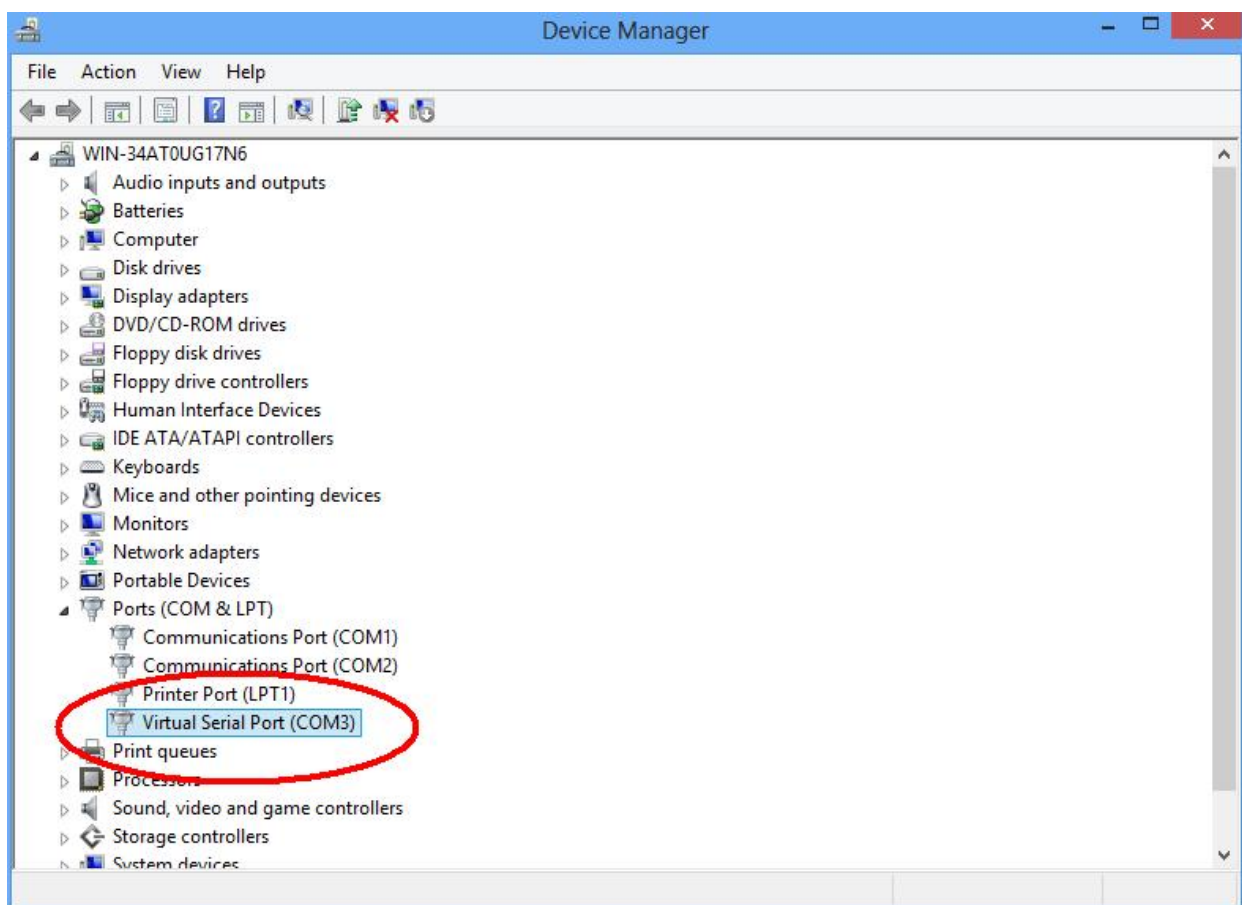
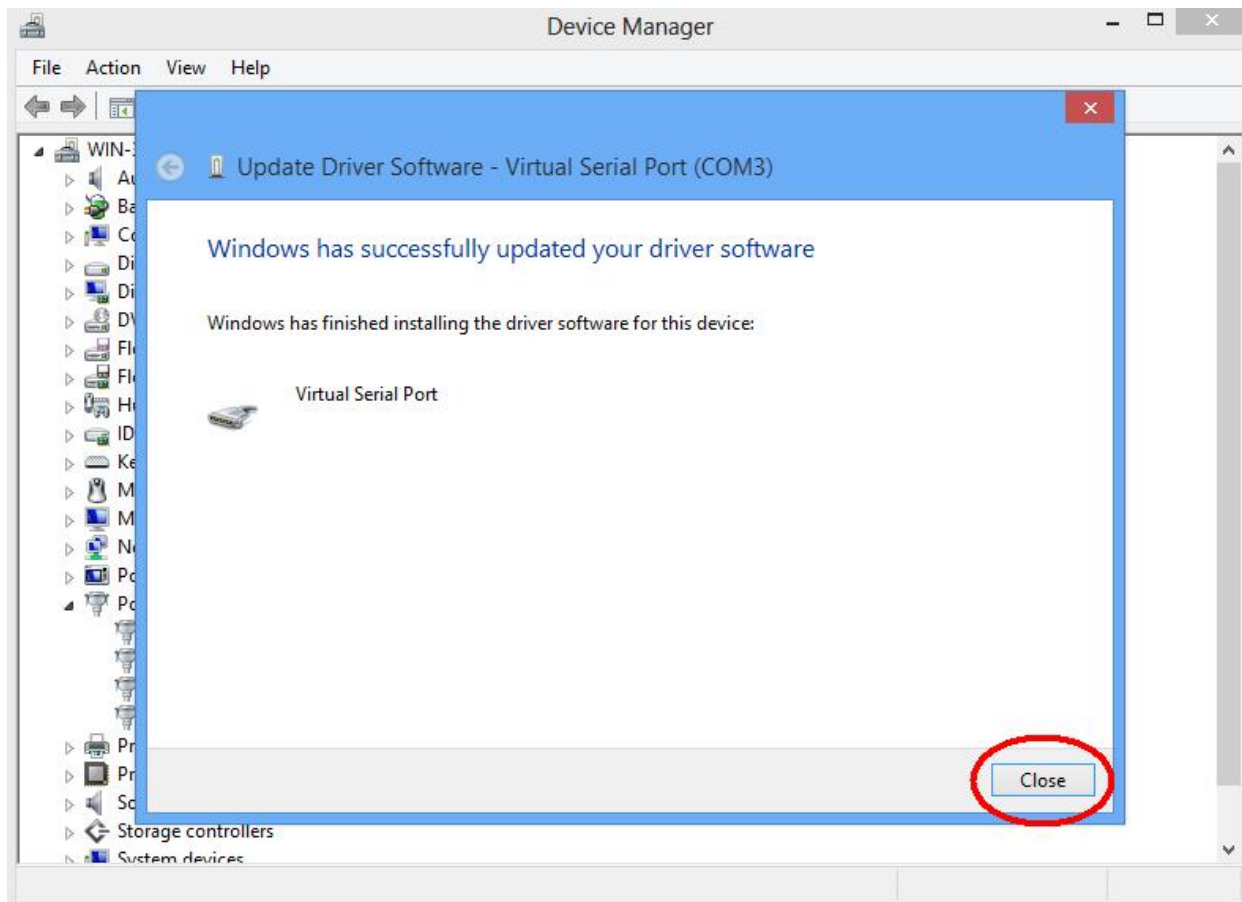
13. Input the driver location



14. Click "Install this driver software anyway" to continue



15. The driver is installed successfully



16. And then install the printer driver accordingly